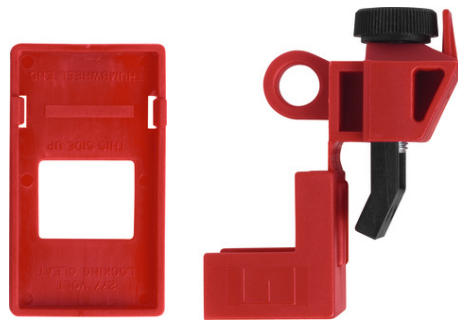


Circuit Breaker Lockout E201

Seite 1 von 1



ACTIVE PROTECTION AGAINST ACCIDENTAL SWITCHES

Especially in the control cabinet, this can help prevent accidents with severe consequences.

The single-pole circuit breaker lockout has an easy-to-use screwing mechanism for secure fixation and an adapter for blade-type electric fuses.

Technologies

- High-quality materials: long-lasting, robust and non-conductive
- Easy-to-use with screwing mechanism for secure fixation
- Can be used universally on common single-pole circuit breakers
- With adapter for blade-type electric fuses

Use and application

- Block access to single-pole circuit breakers during maintenance

Variants

- Color: Red

Technical data - Circuit Breaker Lockout E201

Weight [lbs]	0.03 lbs
color	red
EAN	4003318003684