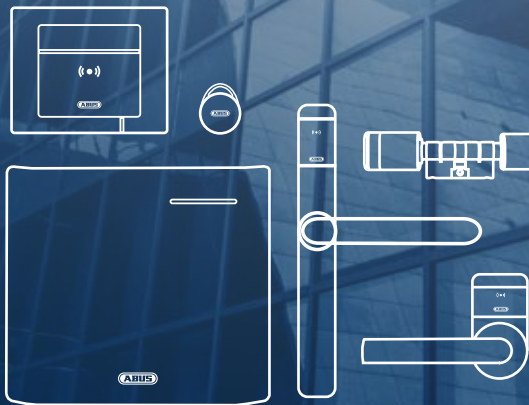




Security Tech Germany

TECTIQ®

**SIMPLE. ACCESS.
ORGANISE.**



abus.com



Iron Rock

1924

MAKING
LIFE A
LITTLE
MORE
SECURE

SECURITY SINCE 1924

Since the development of the legendary "Iron Rock" padlock, ABUS has stood for security, stability and quality. Characteristics that still reflect the company's philosophy today and have paved the way for ABUS mechanical and digital locking technology.

ABUS mechanical locking systems and electronic locking systems such as CodeLoxx and wAppLoxx Pro Plus mark a milestone for commercial security.

Now new: the ABUS **Tectiq locking system** based on Access-on-Card technology, the standard for electronic access control systems in commercial and public buildings of all sizes.



2000
SLT



2003
ZL



2008
CodeLoxx

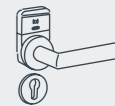
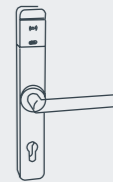
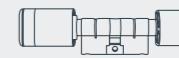


2016
wAppLoxx



2019
wAppLoxx Pro

Tectiq

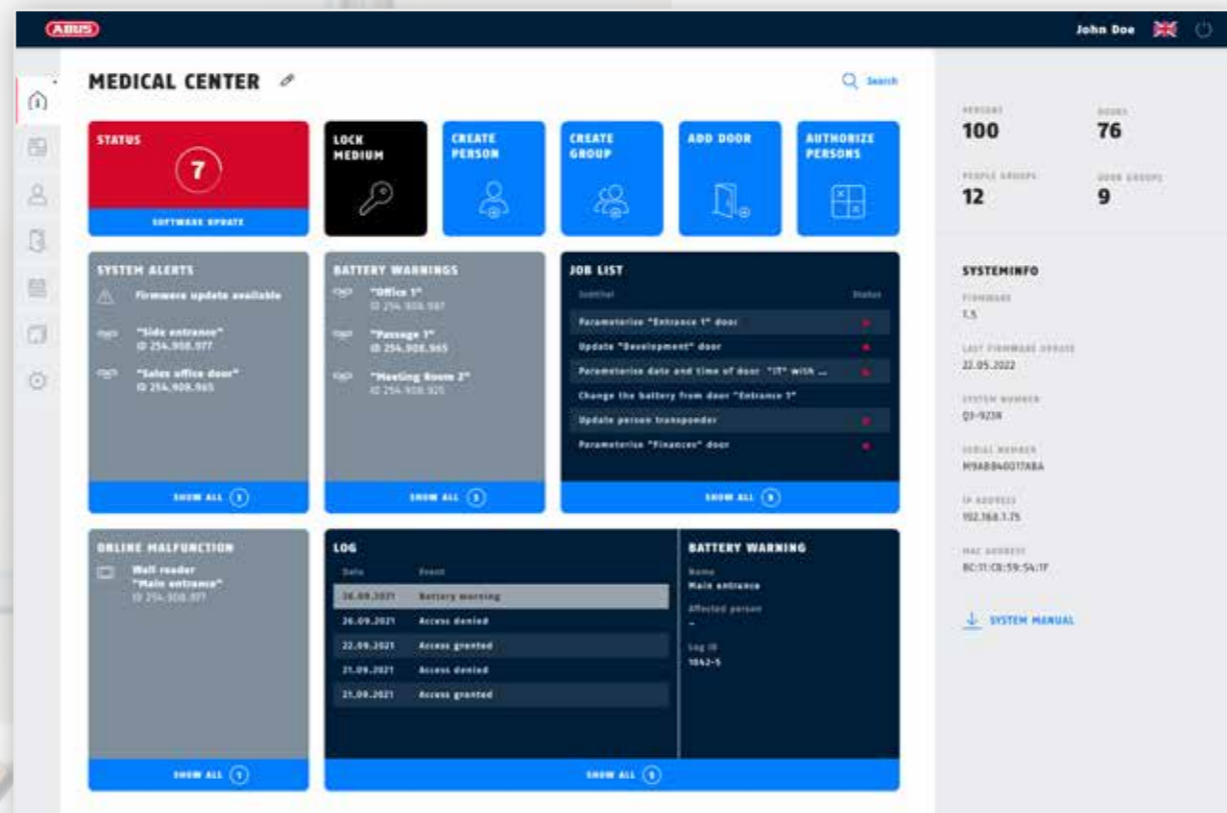


TODAY

THE TECTIQ SYSTEM

SOFTWARE ACCESS MANAGER

- Intuitive dashboard
- Access management according to individual and group rights
- Locking plan matrix with management option for special rights
- Easy creation of schedules and holidays
- Automatic job list for smooth operation



EXTENSIVE PROPERTY PORTFOLIO

- Cylinder, fitting, compact fitting, wall reader
- (Offline) door components for easy and quick installation
- Online update terminals (LAN/WLAN) with access and validation function
- Wide range of configurations with choice of design



TECTIQ SYSTEM CAPACITIES

16,000



NUMBER OF PEOPLE

64,000



NUMBER OF DOOR COMPONENTS

100



NUMBER OF UPDATE TERMINALS

5

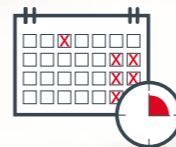


NUMBER OF ADMINISTRATORS



LOCAL DATABASE

SYSTEM HIGHLIGHTS



SCHEDULE & HOLIDAYS

For time-limited access of a person or group of people



OFFICE MODE FUNCTION

Permanent opening of a door component, for example during business hours



WORKS COUNCIL MODE

Access to personal logs only with the consent of the works council



CROSS-LOCATION EQUIPMENT

Online consolidation of cross-location update terminals



ADMIN APP

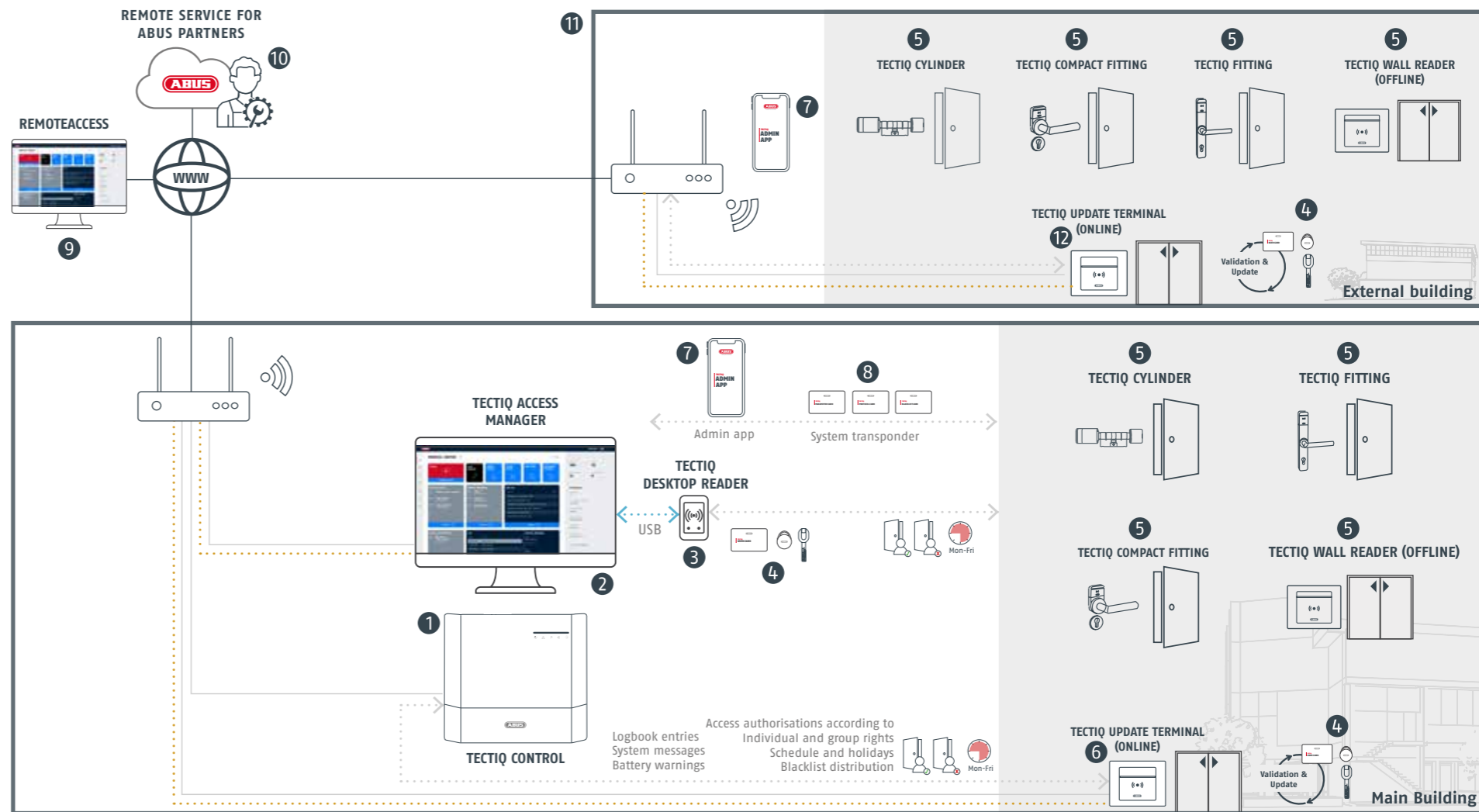
Programming door components

TECTIQ SYSTEM STRUCTURE

CROSS-LOCATION EQUIPMENT

- 1 Access control centre with local database
- 2 "Access Manager" desktop application software
- 3 USB desktop reader
- 4 Tectiq locking media
- 5 (Offline) door components
- 6 Online update terminal
- 7 ADMIN APP (iOS/Android)
- 8 System transponder
- 9 Online remote access via Access Manager
- 10 Remote service for ABUS partners
- 11 Central access management of multiple locations
- 12 Update terminal with online connectivity to the main system

— LAN - - - - - Wi-Fi <- - - - -> USB <- - - - -> Data transfer — Internet



SYSTEM COMPONENTS

SOFTWARE TECTIQ ACCESS MANAGER

- Intuitive dashboard
- Access management according to individual and group rights
- Locking plan matrix with management option for special rights
- Easy creation of schedules and holidays
- Automatic job list for smooth operation



TECTIQ CONTROL

- Access control centre
- Local database
- Remote access and ABUS Cloud (optional)

SYSTEM COMPONENTS



TECTIQ CYLINDERS

- Modular design for flexible length adjustment
- Standard and security drill protection
- Range of configurations with choice of design

Installation location:
Flexible use for exterior and interior doors

SYSTEM COMPONENTS



*Zertifizierung in Vorbereitung

TECTIQ FITTING

- Standard and security variant
- With and without mechanical override
- Wide range of configurations

Installation location:

Flexible use for exterior and interior doors



*Zertifizierung in Vorbereitung

TECTIQ COMPACT FITTING

- Electronic handle solution
- Very easy to use
- Simple installation

Installation location:

Indoor

SYSTEM COMPONENTS



TECTIQ WALL READER UNIT

- Extendable with RS-485 standard
- Visual and acoustic signals
- Elegant design with high-quality, scratch-resistant glass

Installation location:
Variant for indoor (IP44) and outdoor use (IP67)
in black and white



TECTIQ
Control Unit Updater Online UP



TECTIQ
Control unit offline UP

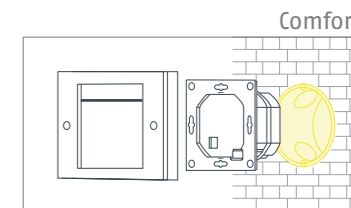
Update terminal

Stand-alone wall reader

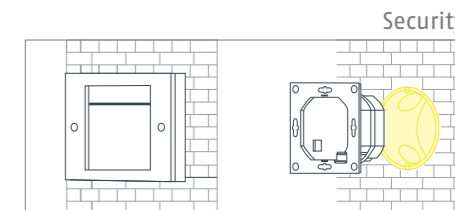
TECTIQ CONTROL UNIT

- Integration via LAN or Wi-Fi
- PoE-capable
- Comfort and security installation variants

Installation location:
Flush-mounted box



Installation of control unit and reader unit
in a flush-mounted box



Separate installation of control unit and reader unit
Connection via RS-485

SYSTEM COMPONENTS



TECTIQ USB DESKTOP READER

- Programming and updating of locking media
- Plug & Play installation via USB

Installation location: Interior
e.g. reception or administration office



TECTIQ LOCKING MEDIA

- Mifare Desfire EV1 4K
- Management of up to 4,000 door components + door groups
- High copy and manipulation protection

TAT SYSTEM COMPONENTS



TECTIQ ADMIN APP

Programming door components

- Personalisation of the door components
- Synchronisation of date and time
- Transfer of logs and events
- Transfer of the "Blacklist"
- Firmware update (OTA)



TECTIQ SYSTEM TRANSPONDER

As an alternative or supplement to the ADMIN APP

- Parameter card
- Privacy card
- Reset Card
- Blacklist card
- Protocol card



YOUR PROJECT. OUR SERVICE

When planning and projecting an electronic locking system, many technical and organisational questions need to be clarified. You can count on us for that:
With our new planning department and the special service package that we put together for you all about ABUS Tectiq.



Customer
consultation



Planning support
& service



Tender texts



MADE IN
GERMANY

Production -
Made in Germany

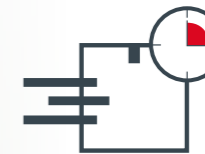
TECTIQ COMPLETE SERVICE

Benefit from it now: Our sales team will be happy to advise you:
Telephone: +49 8207 959 90-333 **E-mail:** tectiq@abus-sc.com

Technical
Support



Short
delivery times



Interested? Do you want to know more?
Watch the explanatory video now and get answers!



ABUS | Security Center GmbH & Co. KG
abus.com

Linker Kreuthweg 5
86444 Affing
Germany
+49 8207 959 90 0
sales@abus-sc.com



Technical and colour specifications subject to change without prior notice.
We assume no liability for mistakes and printing errors. © ABUS Security Centre, 2022