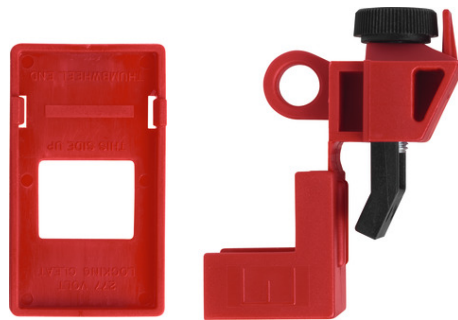


# Circuit Breaker Lockout



## ACTIVE PROTECTION AGAINST ACCIDENTAL SWITCHING ON

Especially in the control cabinet, this can help prevent accidents with serious consequences.

The circuit breaker rocker is locked in the Off position by the E201 lock, preventing access by unauthorized persons.

## Technologies

- High-quality materials: long-lasting, robust and non-conductive
- Easy-to-use with screwing mechanism for secure fixation
- Can be used universally on common single-pole circuit breakers
- With adapter for blade-type electric fuses

## Operation and use

- Block access to single-pole circuit breakers during maintenance

## Variants

- Colour: Red

## Technical data - Circuit Breaker Lockout

Depth	32 mm
Length	70 mm
Locking Points	1
Max. Width of Circuit Breaker	16 mm
Shackle Diameter	7 mm
Weight [g]	13 g
Width	26 mm
colour	red

# Circuit Breaker Lockout



Security Tech Germany

Seite 2 von 2

---

## Technical data - Circuit Breaker Lockout

EAN	4003318003684
-----	---------------