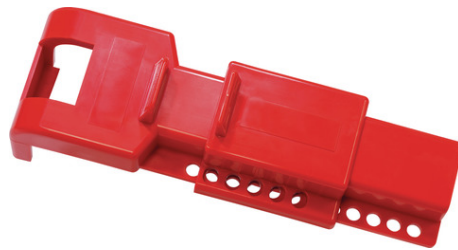


# Throttle valve lockout V600

Seite 1 von 1



## LOCKS THROTTLE VALVES

The V600 expands the Lockout/Tagout product family from ABUS and increases occupational safety in industry and commerce.

With the V600 lockout, throttle valves are secured by two simple plastic components that can be pushed together so that they cannot be opened accidentally after the lever has been properly tightened. A padlock locks the device and can thus prevent the valve from opening unintentionally during maintenance work on the system. The V600 lockout is flexibly adjustable and therefore works with all common valve handles.

## Technologies

- Plastic components push together

## Use and application

- For securing valves against unintentionally restarting during maintenance
- Locks throttle valves by attaching an additional padlock
- Secures the OFF position by fixing the valve handle in place
- For all common valve handles thanks to flexible adjustment option

## Technical data - Throttle valve lockout V600

Weight [lbs]	0.79 lbs
color	red
EAN	4003318972676